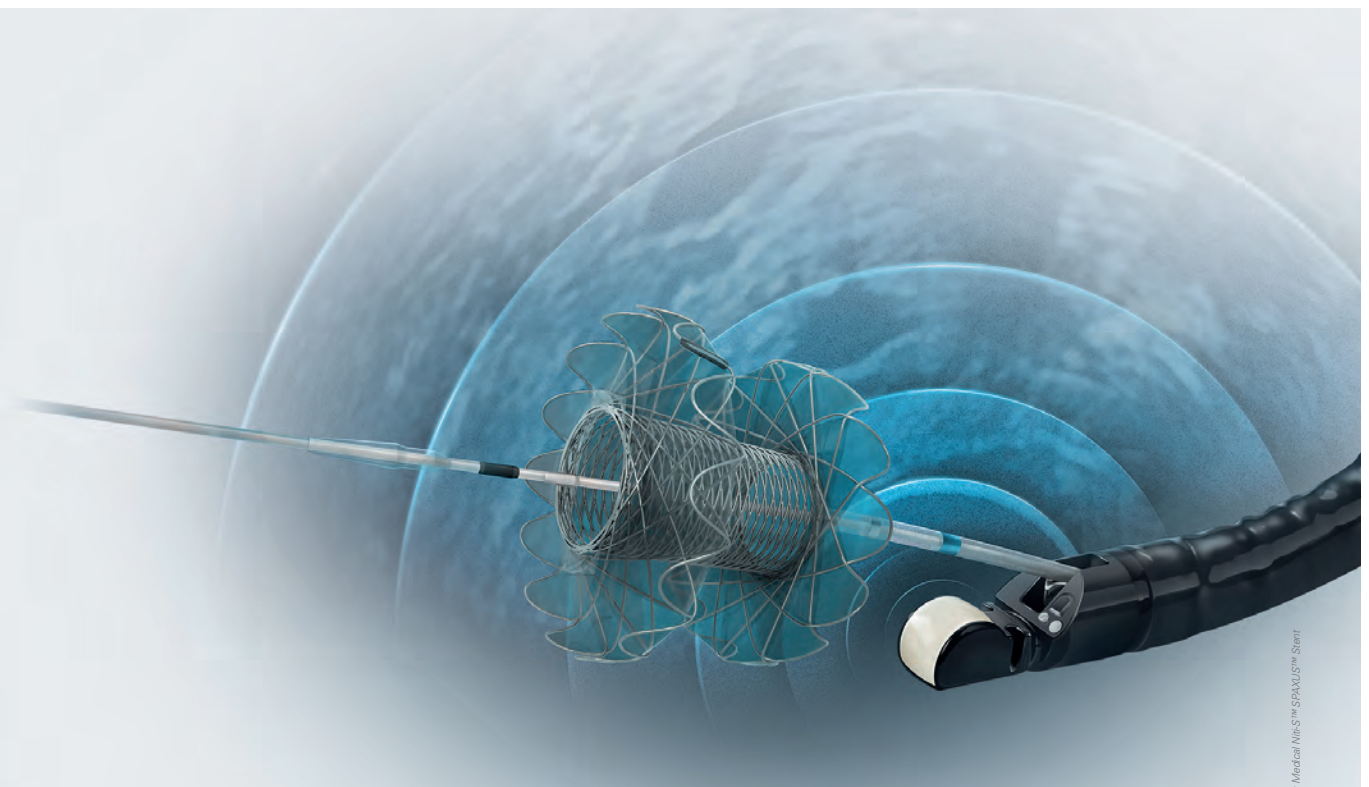


Ultrasound Video Gastroscope EUS-J10 line-up

Broaden your perspective



Tsui Woong, Medical M&S™ SPAXUS™, Stent



EG34-J10U (Slim linear)



EG36-J10UR (Radial)

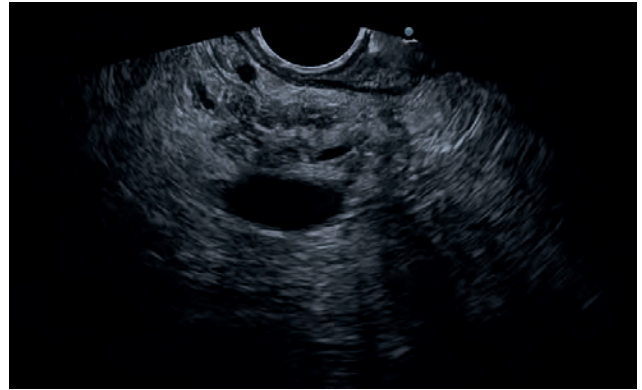


EG38-J10UT (Therapeutic linear)

The PENTAX Medical Ultrasound Video Gastroscope EUS-J10 line-up is designed for optimized procedural efficiency. Together, Hitachi and PENTAX Medical provide brilliant imaging and unique features in a joint clinical solution. This combination allows for clear visualization, successfully enabling endosonographic diagnosis and advancing therapeutic procedures for the benefit of patients.

Optimized procedural efficiency through:

- Shorter, wide angle ultrasound sensor
- Smaller bending radius
- Larger working channel
- Smaller, lightweight and ergonomic hand piece design



Optimize Access

Increased maneuverability and improved ergonomics ensure superb stability and ease of intubation for higher procedural success rates, optimized working comfort, and better patient tolerance.

Enrich Diagnostic Findings

Greater detail, better delineation, and superior penetration: a proven PENTAX-Hitachi image quality enhanced to provide improved diagnostic outcomes, and guidance on therapy.

Redefine Therapy

A unique, enlarged 4.0mm working channel expands therapeutic capabilities to advance EUS-guided intervention while providing full control of the procedure.

Ultrasound Video Gastroscope EUS-J10 line-up

	EG36-J10UR	EG34-J10U	EG38-J10UT
Direction of view	Forward	Forward oblique (45°)	Forward oblique (45°)
Field of view [°]	140	120	120
Depth of field [mm]	3–100	3–100	3–100
Tip angulation up/down [°]	150/70	160/130	160/130
Tip angulation right/left [°]	70/70	120/120	120/120
Distal end width [mm]	10.4	12.9	14.3
Insertion tube width [mm]	12.1	11.6	12.8
Minimum instrument channel width [mm]	2.4	2.8	4.0
Insertion portion working length [mm]	1,250	1,250	1,250
Total length [mm]	1,566	1,566	1,566
Frequency [MHz]	5–13	5–13	5–13
Scan method	Radial	Convex	Convex
Scan angle [°]	360	150	150

In the interest of technical progress, specifications may change without notice.

PENTAX Medical Singapore Pte. Ltd. Asia Pacific Headquarters

438A Alexandra Road, #08-06,
Alexandra Technopark, 119967 Singapore
Tel.: +65-6507-9266
Fax: +65-6271-1691
Email: inquiryAPAC@pentaxmedical.com

TÜV Süd CE0123 • Medical device class: IIa • This product must be used only by healthcare professionals. Before use and for detailed product specifications, please refer to the instructions for use. In the interest of technical process, specifications may change without notice.

In association with:

HITACHI
Inspire the Next

PENTAX
MEDICAL
Excellence in Focus