

EB-1990i HD+™ Bronchoscope

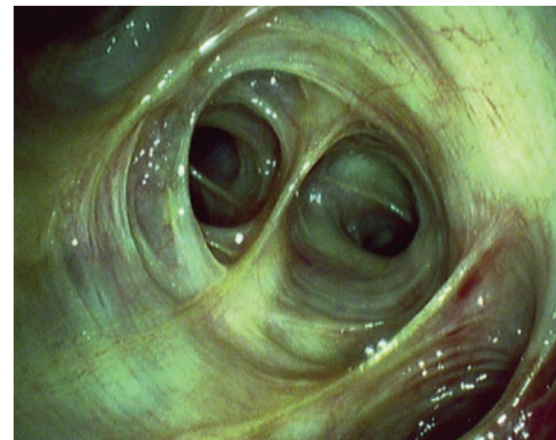
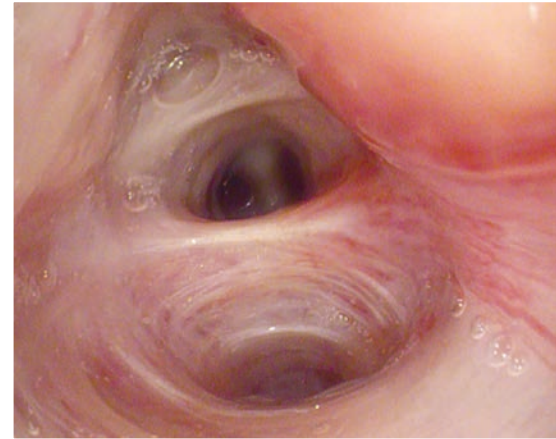
Setting new standards of patient care with HD+ imaging

PENTAX
MEDICAL

Brilliant HD+™ Imaging

Excellent Maneuverability and
Therapeutic Access

PENTAX i-SCAN™ Image
Enhancement Support



Introduce yourself to the brilliant world of PENTAX Medical HD+™ Imaging

The EB-1990i HD+™ Bronchoscope is the latest product in a broad range of high definition endoscopes that set new standards of patient care and state-of-the-art endoscopy. Whether for detection or characterization – you can always feel confident in knowing you are using a highly sophisticated bronchoscope, which provides unrivaled flexibility and incomparable image quality in pulmonology.

Brilliant HD+ Imaging

The EB-1990i is the first of its kind. It features the PENTAX-exclusive HD+™ megapixel resolution CCD that delivers unique images of extraordinary high resolution. In combination with excellent and even illumination, this scope provides brilliant images with natural color reproduction allowing for better orientation.

Excellent Maneuverability and Therapeutic Access

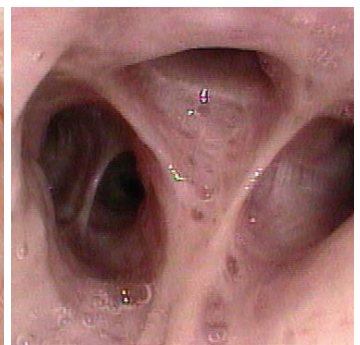
The EB-1990i provides a fully operational instrument channel, which allows for the use of small forceps for adequate tissue biopsies. Moreover, the advanced ergonomics and flexibility of the bronchoscope ensure excellent maneuverability, insertion control and comfort.

PENTAX i-SCAN™ Image Enhancement Support

In combination with the PENTAX Medical EPK-i®5010 high definition video processor, the EB-1990i can also fully support the PENTAX i-SCAN™ technology. i-SCAN is a digital, post-processing image enhancement technology that provides the user with an enhanced view of the texture of the mucosal surface and the blood vessels. i-SCAN can be easily activated on the EB-1990i at the touch of a button.



HD+™ Megapixel Resolution



Standard Definition (SD)

Discover the difference between the HD+ and SD images.

Specifications

Model	Insertion Tube (mm)	Distal End (mm)	Instrument Channel (mm)	Working Length (mm)	Field of View (°)	Tip Deflection Up/Down (°)	Focal Range (mm)	STERRAD® NX™ Compatibility
EB-1990i	6.4	6.6	1.2	600	120	180/130	3–50	Yes

PENTAX Medical

Americas Head Office

3 Paragon Drive
Montvale, NJ 07645
Phone +1 800 431 5880
Fax +1 201 391 4189
pentaxmedical.com

Canadian Head Office

6715 Millcreek Drive, Unit 1
Mississauga, ON L5N 5V2
Phone +1 800 750 5558
Fax +1 905 286 5571
pentaxmedical.ca

PENTAX
MEDICAL
Excellence in Focus

i-SCAN is intended to be used as an optimal adjunct following traditional white light endoscopy and is not intended to replace histopathological sampling.

Copyright 2016. All Rights Reserved. All company and product names and marks contained within are federally registered trademarks, trademarks, or service marks of PENTAX of America, Inc. Product specifications are subject to change without notice, and without any obligation on the part of the manufacturer.

MK-456 Rev: B